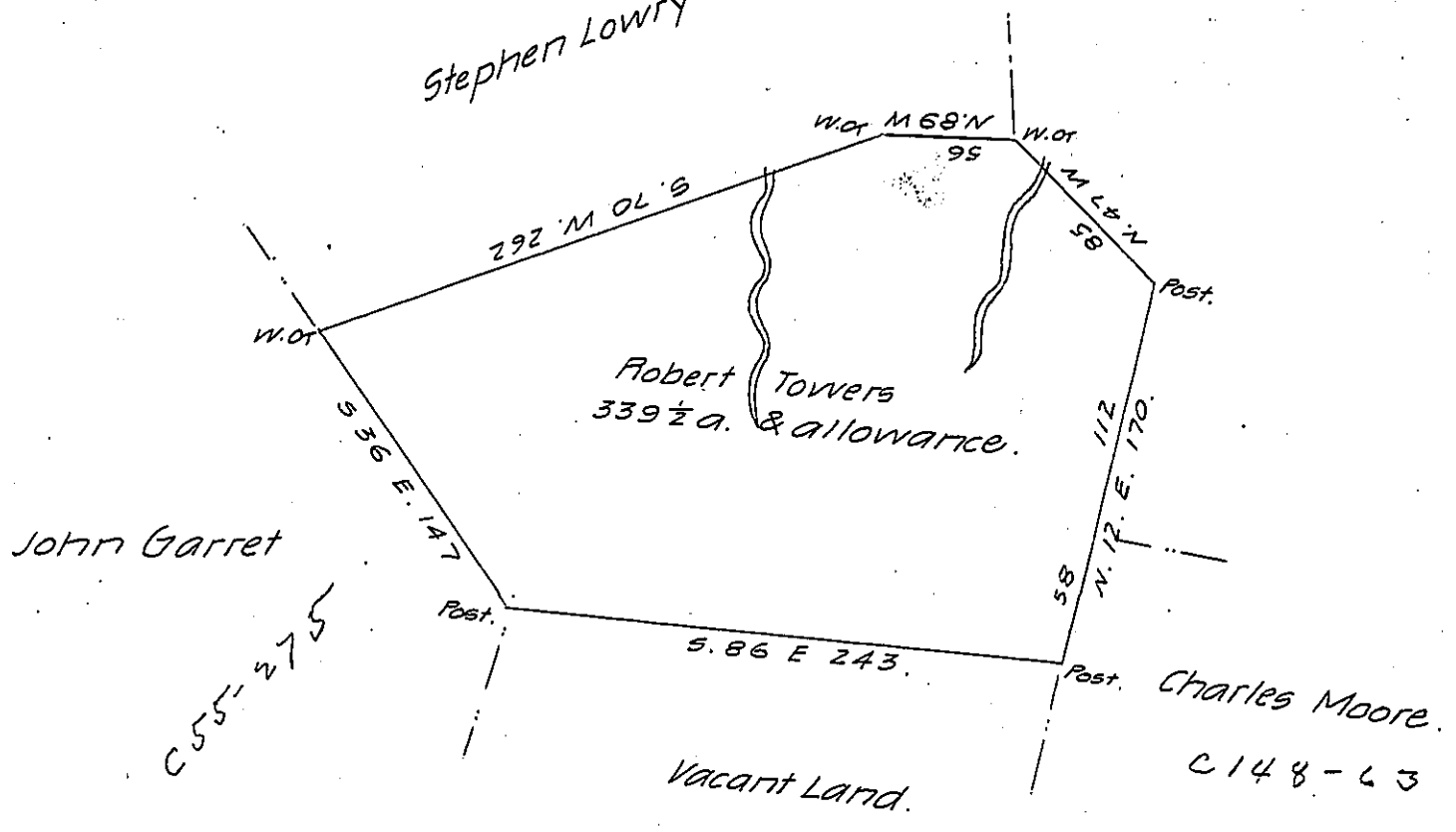


C-120-98  
Stephen Lowry



John Garret

C 55-275

Charles Moore.  
C 148-63

Survey'd to Robert Towers on the 4th day of September 1787 the above described tract of three hundred and thirty nine acres and an half of an acre and allowance of six Pr. Cert. Situate on a small run emptying into the west side of Plum Creek, about one mile from the mouth of said run, in Westmoreland County by Warrant of the 1st day of July 1784.

Joshua Elder D.S.

John Lutteris Esqr. S. Genl.

IN TESTIMONY that the above is a copy of the original remaining on file in the Department of Internal Affairs of Pennsylvania, made conformably to an Act of Assembly approved the 16th day of February 1833, I have hereunto set my hand and caused the Seal of said Department to be affixed at Harrisburg, this twenty-sixth day of April 1907

*Geo R Brown*  
Secretary of Internal Affairs.